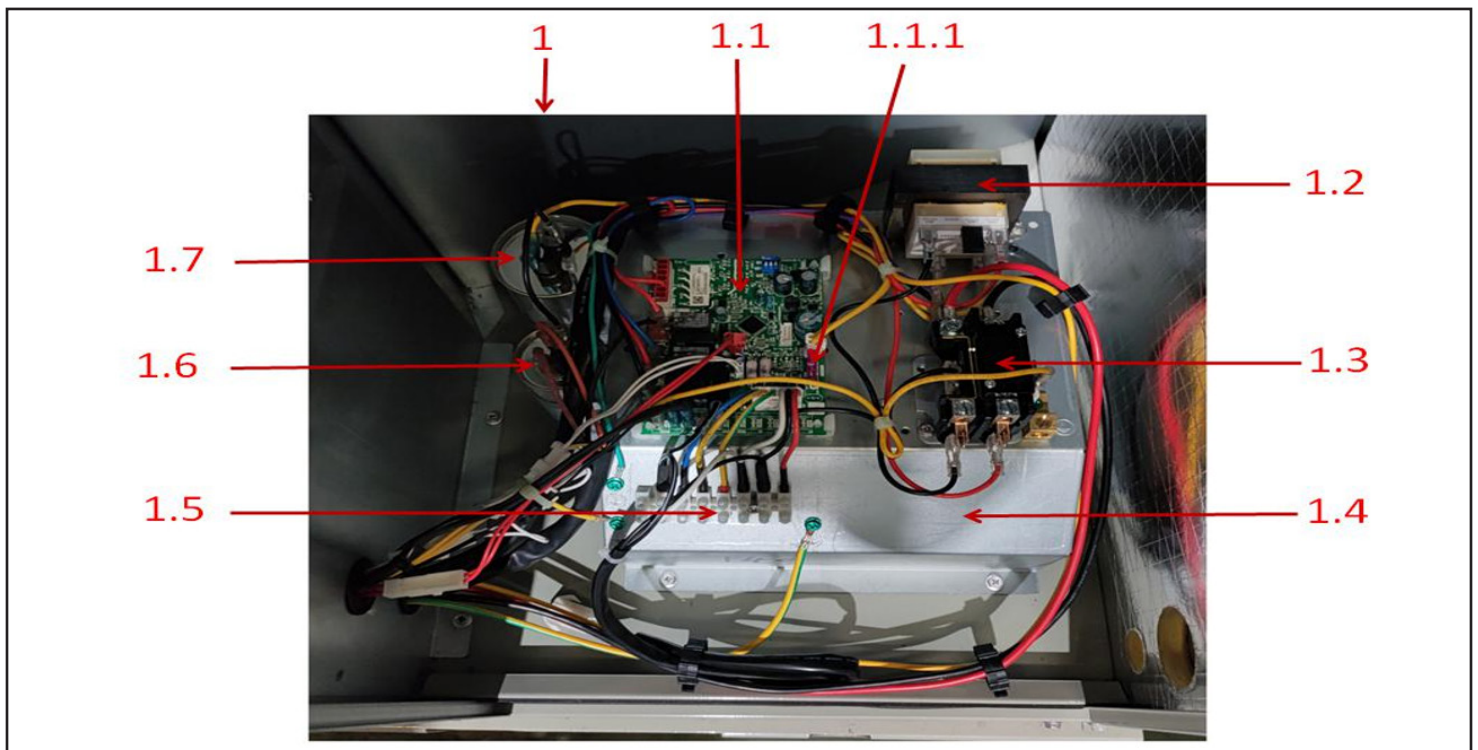
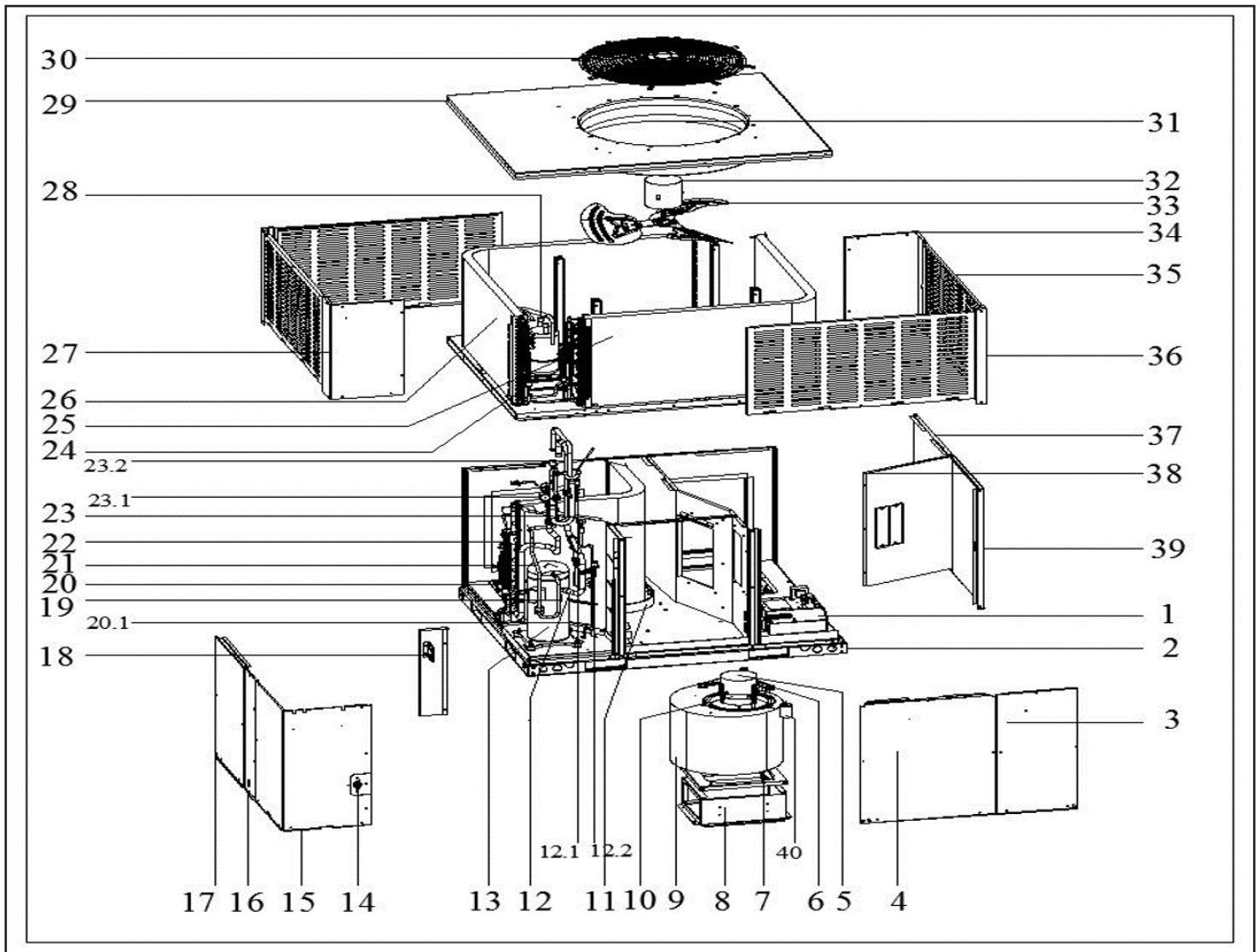

Comfort-Cire® **Century**®
SE Series

Heat Pump Packaged Unit

RHP4800S1A
Parts List



MARS®



Electric Gas Packaged Unit

RHP4800S1A Parts List

EX_ID	Spare Parts Code	Part Name(EN)	Qty.	Recommend store spare parts
1	17227700000959	E-part box assembly	1	
1.1	17127700000966	Main control board assembly	1	YES
1.1.1	11203001001353	Fuse	1	YES
1.2	11203103000194	Linear Transformer	1	YES
1.3	11203502000032	AC contactor	1	YES
1.4	12227700006629	Electrical appliance mounting plate assembly	1	
1.5	17400401000196	Wire joint, 8P	1	
1.6	17400103000151	Capacitor	1	
1.7	17400103000133	Capacitor	1	
2	12227700A07357	Chassis part	1	
3	12227700009002	Internal panel assembly	1	
4	12227700A07367	Internal panel assembly	1	
6	12223000001932	Supporter subassembly of fan motor	3	
7	12227700006164	Wind wheel fixed plate	1	
8	12227700006171	Fan support board	1	
9	12200101000213	Wind turbine parts	1	YES
10	12223000001992	Supporter of fan motor	1	
11	12127700000097	Drainage pan assembly	1	YES
12	15427700002011	Suction pipe assembly	1	
12.1	15427000001439	Fusible plug assembly	1	
12.2	17400516000089	Pressure switch	1	YES
13	11102010000411	Fixed Speed Scroll compressor	1	YES
14	11201007000025	Room Temperature Sensor	1	YES
15	12227700A07301	Panel	1	
16	12227700A07376	Column assembly	1	
17	12227700A07372	Internal panel assembly	1	
18	12227700008912	Installation board	1	YES
19	17400513000070	Discharge Temp. sensor	1	YES
20	15427700001995	Throttle assembly	1	YES
20.1	15500210004110	Throttle	1	YES
21	15427700001991	Air discharge pipe assembly	1	
22	15827700001189	Evaporator assembly	1	YES
23	15427700002010	Four-way valve assembly	1	YES
23.1	15500216000084	4-way valve	1	YES
23.2	174005160000101	Pressure switch	1	YES
24	11201007000412	Pipe Temperature Sensor	1	YES
25	15827700001048	B unit condenser assembly	1	YES
26	15827700001028	B unit condenser assembly	1	YES
27	12227700A07348	Column assembly	1	
28	15500508000082	Accumulator cylinder	1	
29	12227700010180	Top cover welding assembly	1	
30	12927700000301	protection net	1	
32	11002012028483	Single Phase Asynchronous Motor	1	YES
33	12200104000122	Axial fan	1	YES
34	12227700A07314	Column	1	
35	12227700A07351	Protective plate assembly	4	
36	12227700006368	Column	2	
37	12227700009000	Internal panel assembly	1	
38	12227700006260	Circuit board assembly duct	1	
39	12227700009008	Column assembly	1	
40	17400103000149	Capacitor of compressor	1	

Due to ongoing product improvements, specifications and dimensions are subject to change and correction without notice or incurring obligations. Determining the application and suitability for use of any product is the responsibility of the installer. Additionally, the installer is responsible for verifying dimensional data on the actual product prior to beginning any installation preparations.

Incentive and rebate programs have precise requirements as to product performance and certification. All products meet applicable regulations in effect on date of manufacture; however, certifications are not necessarily granted for the life of a product. Therefore, it is the responsibility of the applicant to determine whether a specific model qualifies for these incentive/rebate programs.



1900 Wellworth Ave., Jackson, MI 49203 • Ph. 517-787-2100 • www.marsdelivers.com

